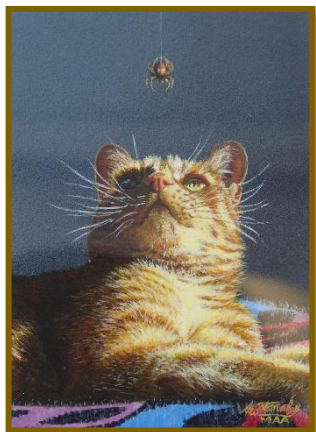


## 2017 AWARD OF MERIT WINNERS



“CURIOUS RUSTY”

BY AKIKO  
WATANABE



“FISHING RIGHTS”

BY JEAN COOK



## RULES

1. The 1/6<sup>th</sup> rule or “in the spirit of a miniature” is encouraged.
2. All entries must be original works by living individual artists over 18 and not rendered under direct classroom instructions. Copies of other artists’ work or published photographs will not be accepted. Work must not have been previously exhibited in a Heartland Art Guild Miniatures Show.
3. Image size for paintings **must not exceed** 25 square inches. Outside edge of frame **must not exceed** 50 square inches. Image size for sculpture **must not exceed** 6 inches in any direction, including the base.
4. Mats, frames and mountings shall be delicate and in proportion to work.
5. All work must be ready for hanging with wire and screw eyes or d-rings. **Two small Velcro patches** must be attached to back lower corners. No saw tooth hangers or plastic frames. Frames with easel backs will not be accepted. Work must be neatly covered on the back with paper.
6. No distasteful nudes or disrespectful work will be hung. This will be at the discretion of the show committee and the Museum staff.

Work not following these rules may be hung if space allows, but is not eligible for awards.

All entries will be handled with care. However, the managers of the exhibit and the Museum staff will not be responsible for any loss or damage. Your signature means you accept these rules and grant permission to the Heartland Art Guild to reproduce the artwork for advertising purposes.

For information call committee members:

Jean Cook @ 785-521-0449 ([cookijean@netzero.net](mailto:cookijean@netzero.net))

Patsy Bortner @ 913-244-4587 ([patsybortner@suddenlink.net](mailto:patsybortner@suddenlink.net))

## SHOW LISTINGS

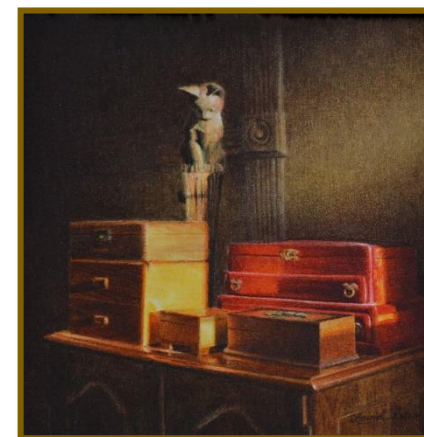
[www.artkc.com](http://www.artkc.com), [www.miniartsupply.biz](http://www.miniartsupply.biz),

[www.art-in-miniature.org](http://www.art-in-miniature.org)

## CALL FOR ENTRIES

### 14<sup>th</sup> ANNUAL

## HEARTLAND ART GUILD INTERNATIONAL MINIATURE PAINTINGS & SCULPTURES ART SHOW



### 2017 BEST OF SHOW

### “BOXES, MIDSUMMER”

BY JANET LAIRD-LAGASSE

July 2 – August 3, 2018

Miami County Historical Museum

Paola, Kansas

10AM to 4PM Monday - Saturday